



X1-Meter-WiFi

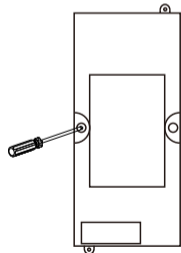
Quick Installation Guide

Please read this guide carefully before use.

I Installation



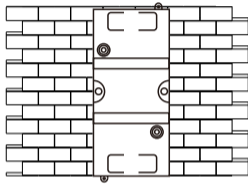
- 1 Unscrew the two screw in the middle of plastic meter box. The box will be separated into two parts.



01

- 2 Fix the base cover of box.

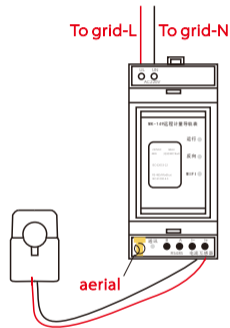
You can fix it on the wall or other place.



02

- 3 Connect wires.

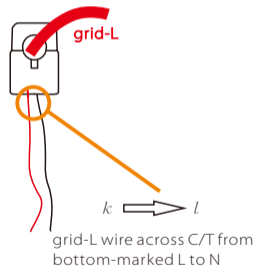
Step1: L/N wire and aerial connection.



03

Step2: C/T connection.

First, open the C/T;
Then, View the bottom-marked current flow of C/T, grid-L wire across C/T from bottom-marked L to N;
Last, close the C/T.

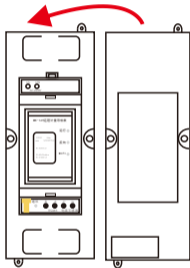


04

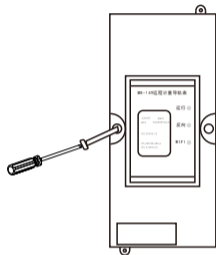


- ④ Press meter on the base cover of box, then cover the top cover of box.

Place the top cover on the base cover.



- ⑤ Screw the two screw in the middle of plastic meter box.



II WiFi connection



Power on inverter before connecting to WiFi!

Please refer to WiFi user manual.
Note: Running and WiFi light will be on.

III Related meter to solax-portal.com

Note: Confirm WiFi configuration has done successfully, and make sure Internet service is accessible.

- ① Login monitoring website.

Input "www.solax-portal.com" on web browser. Fill up username and password, then click "Login" to enter home page.



- ② Click "Inverters", then edit related inverter, fill in "Power meter SN", click "save".



Note: Please make sure the inverter has been added to the site. If not, Please refer to WiFi user manual.

- ③ Click "Overview" page, user can monitor inverter and check the data.



- ④ Click "Report Analysis", then click on "view". User can see below value display.

